

ArcticSpring 100C

Massive Hot Water Boiler & Direct Chill Combination



An 8ltr 2.8 kw
Hot Water Boiler
That Delivers 5ltr
Instant Draw Off Of
90C+ Hot Water

23cm Dispensing
Height To Fill
Bottles

The Direct
Chiller Delivers
20ltr Per Hour Of
Water Less Than
12C!

- Massive hot water capacity - 5ltr instant draw off with 13ltr per hour above 90C hot water
- 2.8 kw boiling element
- Excellent chilled capacity of 20ltr per hour below 12C
- 8 screws to open boiler lid for easy access for de scaling and servicing
- Save electricity & be green. Eco light sensor turns the boiler off when the office lights go out. This saves about 25% or £40pa in electricity & reduces carbon
- Avoid scale in a hard water area by connecting the hot water inlet to a Brita type scale REMOVAL filter & a cheaper carbon filter to the chiller inlet
- In a soft water area you can connect the hot & the chilled inlets to a single carbon filter
- Our floodguard inlet solenoid avoids large scale flooding
- Impressive 23cm dispensing height

AA^{first}
WATER COOLERS
& BOILERS



CE RoHS

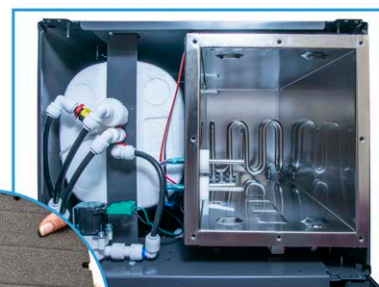
refreshingly different

ArcticSpring 100C

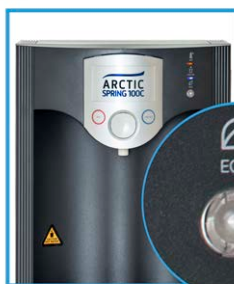
Massive Hot Water Boiler & Direct Chill Combination



Filter Configuration - Space For Both Scale & Carbon Filters. With Removable Blanking Panel



2.8kw Heating Element With Easy Access For Descaling & Inspection



Eco Light Sensor Turns The Boiler Off Overnight To Save Approx 25% or £40 pa in electricity!



Select Hot Or Cold, Then Hold The Dispensing Button Down

Accessories For The ArcticSpring 100C

Water Boiler Hard Water Plumbing & Filter Kit (BPFRAILKIT) with Carbon Block Filter (FILTCAR) & Brita C150 Scale Filter (FILTC150). Which Can Also Be Brought Separately As Replacements When Necessary.



Mains Drainage - Connect The Drip Tray To Mains Drainage. Can Be Supplied With A Pump, To Pump The Water Over 50m & A Rise Of 5m.



3 Litre Overflow Kit Connects The Drip Tray To A 3 Litre Alarmed Overflow Container. The Container Has A Tap To Empty Without Removing It. We Also Stock A 10 Litre Overflow System.



Description	Hourly Output		Temperature		Dimensions H x W x D mm	Weight (Kg)
	Chilled	Hot	Chilled	Hot		
POU Floor Standing	20ltr	13ltr	Above 90C	Below 12C	1135 x 340 x 340	25

Local Distributor

AAFIRST
WATER COOLERS
& BOILERS

www.aafirst.co.uk